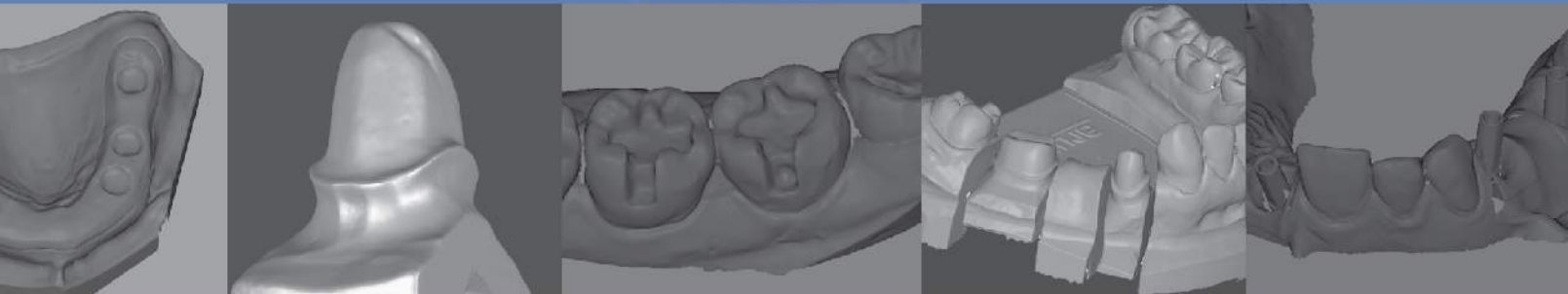


Standard of Excellence in 3D dental scanning

# Identico



## ***For your Daily Application***

The most convenient way to digitalize  
your workflow in the simplest way

## Applications

Identica, which employs two-axis rotation system and a high-end 3D scanning module, is ideal for scanning of a single tooth, full arches or complicated cases. Furthermore, its customized jigs enable easy mounting of any model, and it is possible to scan a wide range of model shapes, Identica provides basic scanning paths specified for each model as standard options. Users can customize paths for models of irregular shapes to obtain perfect scanning data.



Inlay



Bridge



Custom Abutment



Implant Bar

## Key Features



### Twin-camera Technology

Identica boasts a function for obtaining a single set of data with two cameras.



### White light Scanning

The white light 3d scanning technology allows the user to obtain data that are much clearer than the conventional laser type.



### Open System

The basic output format of the Identica is the STL, so any CAD S/W can utilize the file.



### Easy Connection

Identica has simplified connection between computer and scanner by accessing them through USB cable only.



## Specifications

Category	Description
Camera resolution	1.3 Mega pixels
Point spacing	0.065 mm
Scanning area	80mm x 60mm x 60mm
Scanning principle	Phase-shifting optical triangulation, Twin camera Type
Dimension	212mm x 370mm x 449mm
Weight	16.6 kg
Light source	LED, 300 ANSI-lumens
Interface	USB 2.0 high-speed
Power	AC 85 ~ 265V, 47~63 Hz x